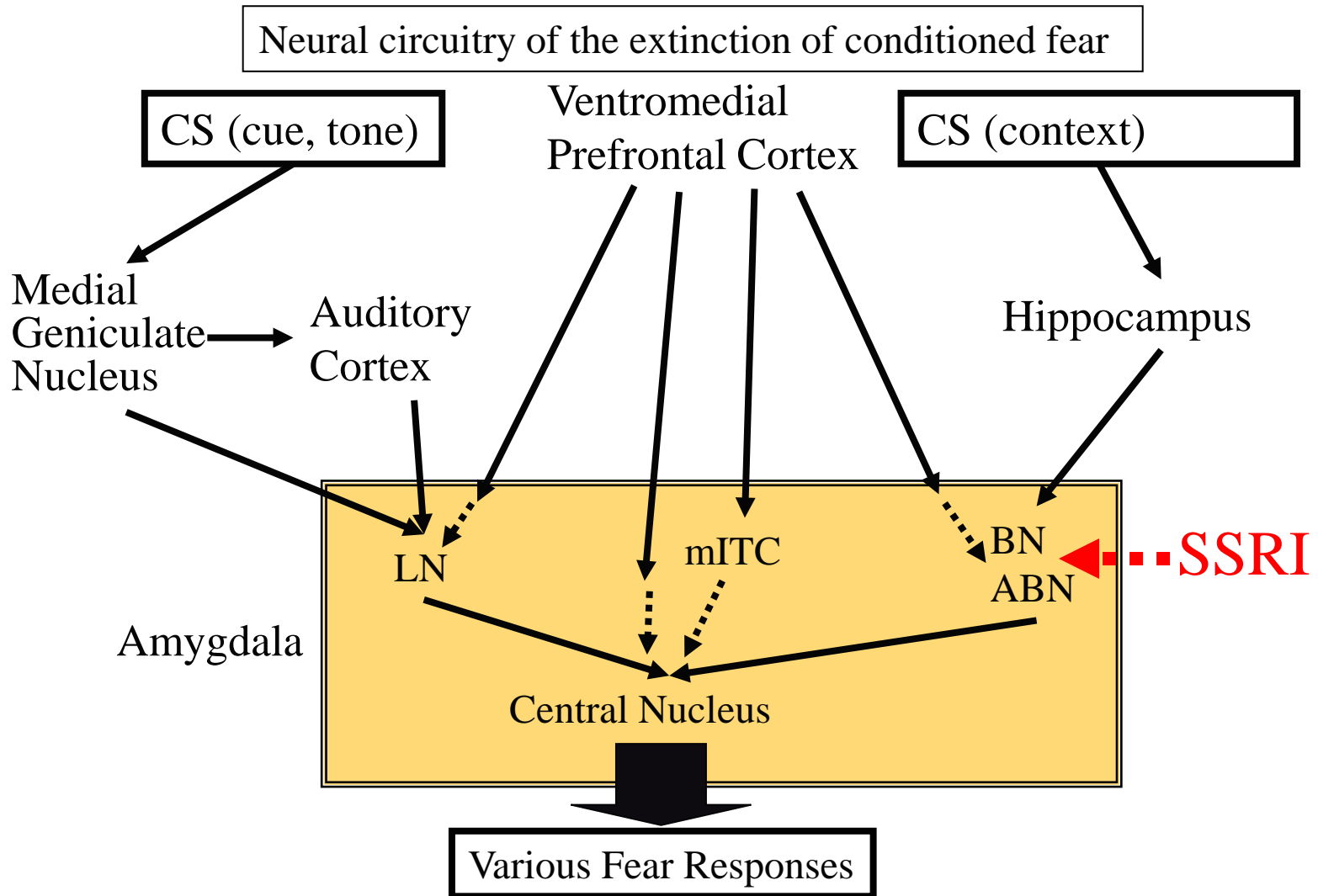
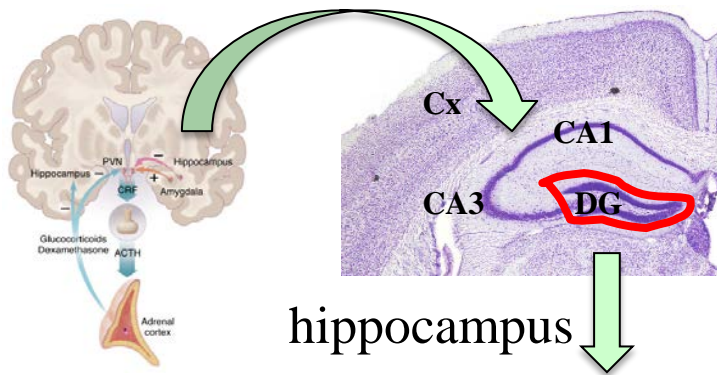


How do SSRIs have an anxiolytic effect?



LN, Lateral Nucleus; BN, Basal Nucleus; ABN, Accessory Basal Nucleus; mITC, medial intercalated cell cluster; dotted line, inhibitory; solid line, stimulatory

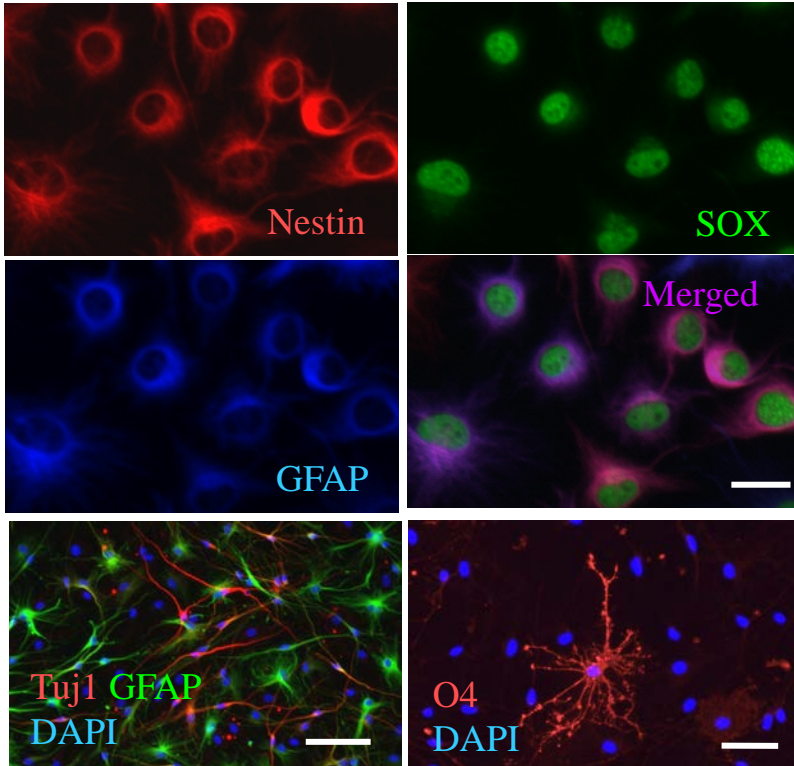
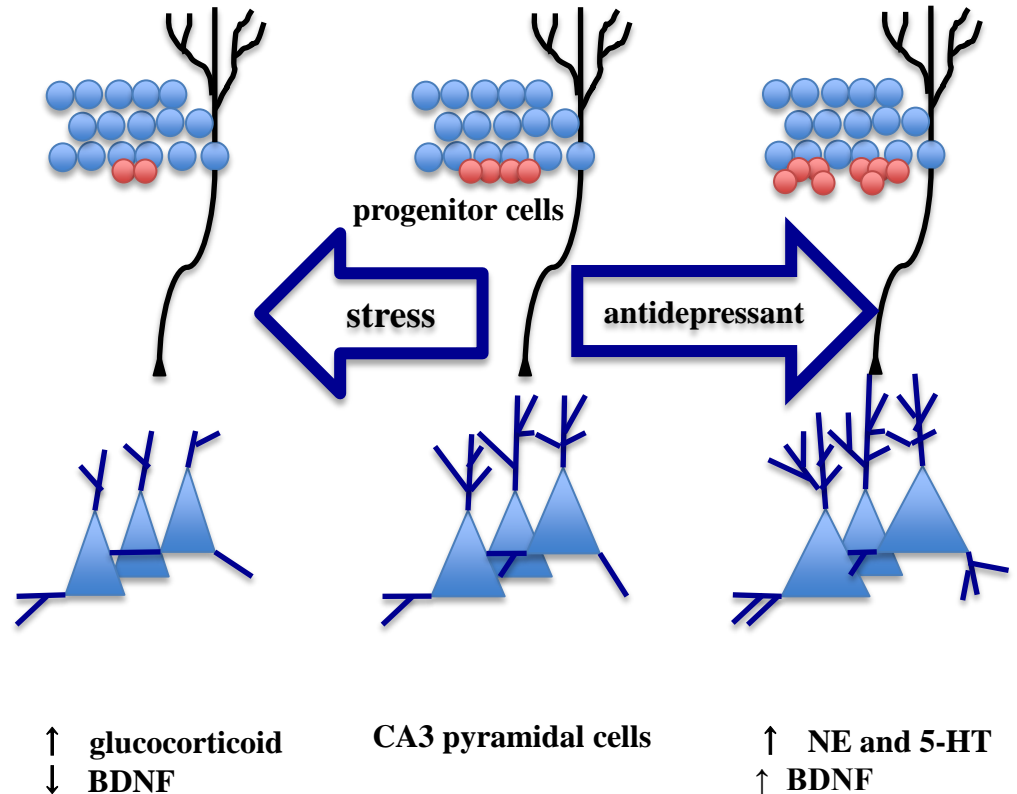


Antidepressants create a new neural network in the hippocampus.

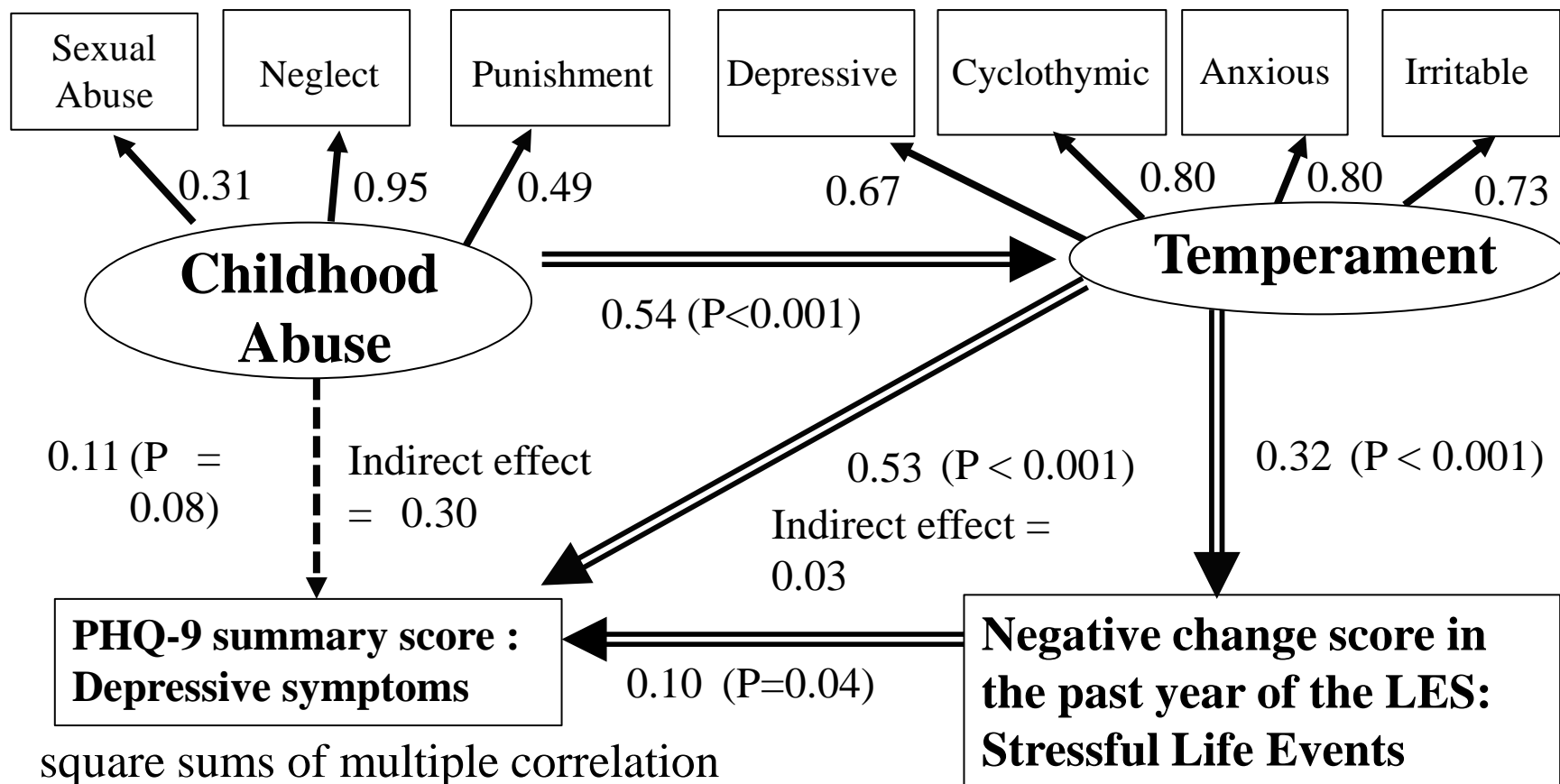
↑ glucocorticoid
 ↑ IL-6
 ↓ VEGF

↑ NE and 5-HT
 ↑ VEGF ↑ proliferation
 ↑ BDNF ↑ survival

granule cell layer



Dose childhood abuse exert influence over emotion in the adult?



square sums of multiple correlation coefficient = 0.41

Is depression a disconnection syndrome?

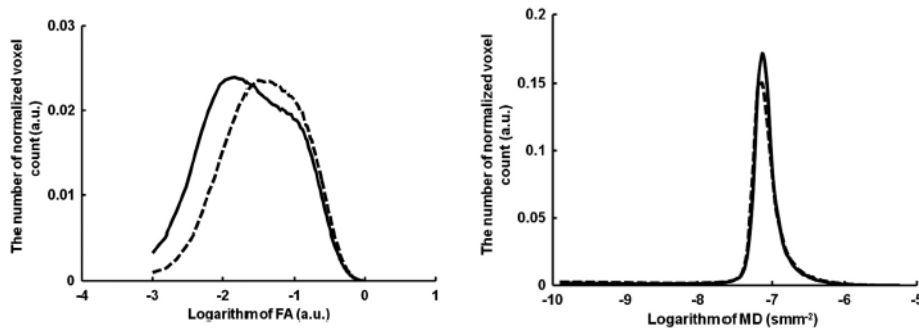
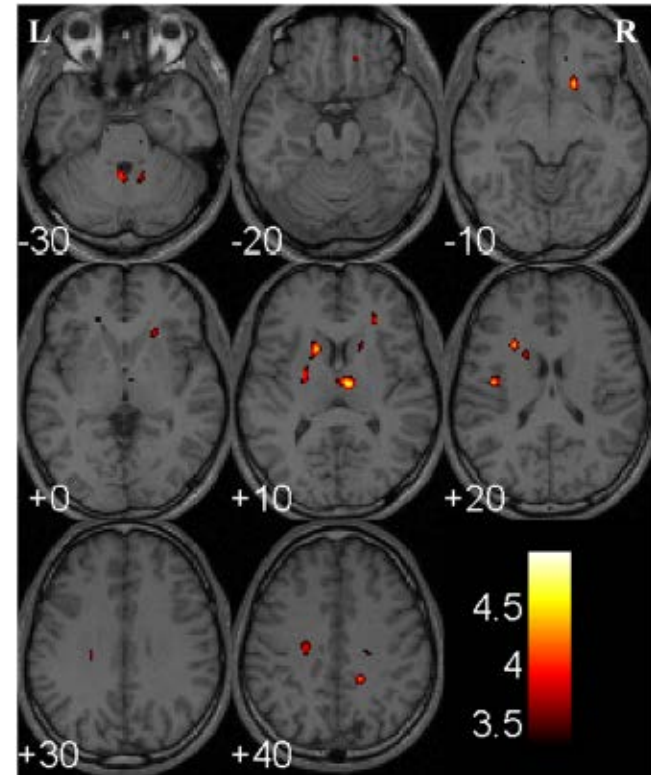


Table 2
Tests of correlation between the abnormal DTI indices and the clinical variables.

	Correlation coefficients (P value)						
	Total disease duration	Duration of current episode	HDRS-17	GAF	MADRS	CGIS	Age
Clusters with significant decrease in FA							
Right frontal white matter (<i>x</i> =12, <i>y</i> =43, <i>z</i> =-18)	-0.296 (0.219)	-0.482 (0.036)*	0.084 (0.732)	-0.012 (0.960)	-0.117 (0.634)	-0.006 (0.980)	0.188 (0.440)
Right frontal white matter (<i>x</i> =37, <i>y</i> =-19, <i>z</i> =59)	0.080 (0.746)	0.318 (0.184)	0.135 (0.583)	-0.462 (0.046)*	0.413 (0.079)	0.412 (0.080)	-0.392 (0.097)
Left frontal white matter	0.247 (0.308)	0.087 (0.723)	0.160 (0.512)	-0.367 (0.122)	0.351 (0.141)	0.377 (0.112)	0.109 (0.657)
Right anterior limb of internal capsule	0.335 (0.160)	0.163 (0.506)	-0.117 (0.634)	-0.479 (0.038)*	0.229 (0.345)	0.363 (0.127)	-0.070 (0.775)
Left anterior limb of internal capsule	0.483 (0.036)*	-0.011 (0.964)	0.078 (0.750)	-0.410 (0.081)	0.384 (0.105)	0.359 (0.131)	-0.308 (0.200)
Left putamen	-0.112 (0.648)	-0.191 (0.433)	-0.026 (0.915)	-0.276 (0.252)	0.120 (0.626)	0.327 (0.171)	-0.397 (0.092)
Mediodorsal nucleus of the right thalamus	0.434 (0.063)	-0.116 (0.635)	0.052 (0.831)	-0.248 (0.307)	0.152 (0.535)	0.326 (0.173)	-0.424 (0.071)
Right cerebellar hemisphere	-0.073 (0.767)	-0.034 (0.891)	0.525 (0.021)*	-0.383 (0.106)	0.272 (0.260)	0.345 (0.148)	0.258 (0.286)
Left cerebellar hemisphere	0.168 (0.492)	0.214 (0.380)	0.434 (0.063)	-0.274 (0.257)	0.252 (0.297)	0.177 (0.470)	0.498 (0.030)*
Peak position of FA histogram	0.576 (0.010)*	0.550 (0.015)*	-0.020 (0.936)	-0.087 (0.723)	0.402 (0.088)	0.040 (0.869)	0.219 (0.368)



Tha KK et al. Psychiatry Res, 2013